



# SVM DORATA CONSTRUCTION CO.



**Our Moto Is To Satisfy Customers By  
Progress , Quality, Cost And Safety**



**BUILDERS**



**CONTRACTORS**



**ENGINEERS**



**EARTH MOVERS**



## ABOUT US



**SVM Dorata Construction Co.**, founded in 2015, has completed various heavy civil projects, including buildings and infrastructure, across NCR, Bhiwadi, Manesar, Neemrana, Gilot, Khuskhera, Bawal, Delhi, and Haryana. With extensive experience in civil engineering aspects such as buildings, infrastructure, and bridges, we have tackled some of North India's most challenging projects. Our hassle-free services, quality work, and timely project completion have earned us a solid reputation. As a Civil and Interior Turnkey Contractor, we handle demolition, excavation, landscaping, construction, renovation, interior works, electrical and plumbing, and waterproofing.



# PRINCIPLE & VISION

- Our hassle free services, quality and project completion are well within stipulated time schedules and has earned us a solid and unmatched reputation in the field of Civil Contracting.
- Client's satisfaction with total quality, cost effectiveness and timely execution with special emphasis/thrust on.



# OUR KEY STRENGTH

- Our team consists of highly qualified and experienced specialists..
- Our prime motto is to fulfill each and every requirement of customer and execute the project with complete accuracy and reliability.
- Quality & Safety - Very good reporting, Scheduling & Cost Control System.
- Tie up arrangement for expert / latest technology know how.

# DORATA EARTH MOVERS

**Dorata Earth Movers** deals in Construction Machinery, JCB Earthmover, Earth Moving and Equipment located in Bhiwadi NCR. We are civil construction contractor, residential building contractors that specialize in constructing major industrial works, e.g. Cement Plants, Power Plants, multi-storied residential, and commercial. The founder Mr. S.D. Dorata, assisted & supported by a team of highly qualified and experienced Engineers, has established an excellent reputation in the Northern part of our country through its quality and cutting edge work.



# OUR SERVICES

**Residential Villas**



**Sanitary, Painting and Plumbing work**

**Flats**



**Malls**



**Civil Contracts**



**Industrial(RCC & Structural)work**

**Pre-fab and on-site fabrication structural work.**



# SAFETY

*"Safety first, quality always."*

**At SVM Dorata Construction Co.**, the health, safety, and welfare of our staff, subcontractors, clients, and visitors are paramount. We strive for excellence in managing health and safety on all construction sites, aiming to mitigate all hazards from our facilities, activities, and site environments.



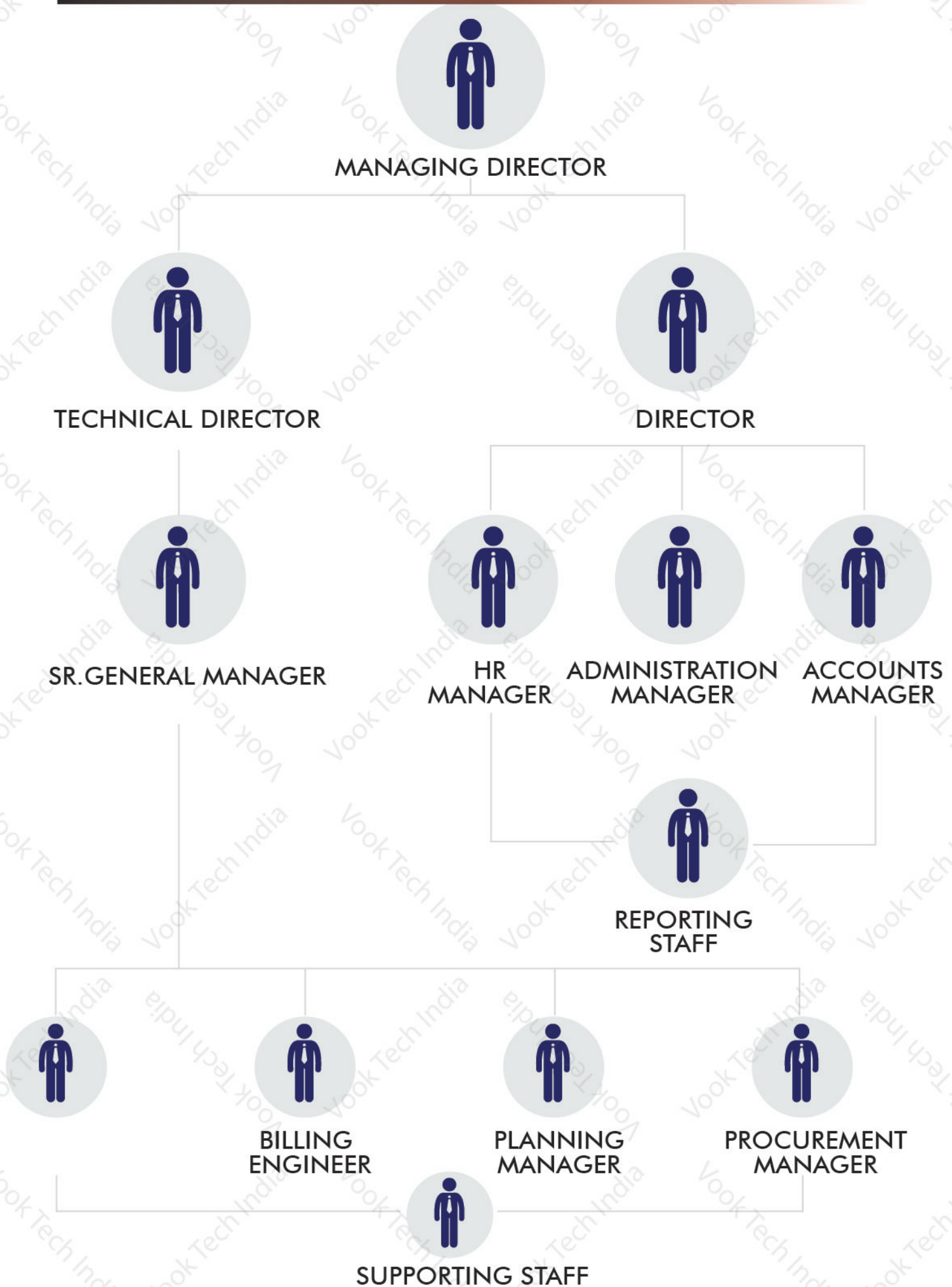
# QUALITY

**At SVM Dorata Construction Co.**, quality is paramount. We ensure client, engineer, and stakeholder expectations are fully met, delivering projects with top-notch workmanship on time.

We use materials that meet or exceed contract requirements and provide comprehensive training for our staff. Our value-added services include market analysis, surveys, and sales statistics.



# CORPORATE FAMILY HIERARCHY



# SITE FAMILY HIERARCHY



HEAD OFFICE



VICE PRESIDENT



SR. GENERAL MANAGER



ARCHITECT



PROJECT MANAGER



SAFETY  
MANAGER



INVENTORY  
INCHARGE



QC/QA ENGINEER



BILLING ENGINEER



PROJECT ENGINEER



FOREMAN



SUPERVISOR



SAFETY SUPERVISOR



SECURITY



STOREKEEPER



TIME KEEPER



PURCHASE



# OUR VALUABLE CLIENTS



shree krishna  
traders

shree ganesh  
engineering



dhruv tech  
engineering

# NAME OF EQUIPMENTS



Excavator (Pockland) Tata-110:  
02 Nos.



Roller Vibrows : 02 Nos.



Road Roller : 02 Nos.



Loadall (Hydra, Excevation, Forkit):  
05 Nos.



Bum Fift :01 Nos.



Mini Batching Plant : 02 Nos.



Ajax Flori : 02 Nos.



Loader 2021 Hindustan : 04 Nos.



JCB 3Dx : 10 Nos.



JCB 4Dx : 10 Nos.



Braker JCB : 03 Nos.



Hyava Tipper : 05 Nos.



Tractor Trolley : 05 Nos.



Total Station : 03 Nos.



Dumipi Level : 10 Nos.



Vaccum De Watering Flooring  
Trimex Machine : 10 Nos.



Mixer Without Hopper : 10 Nos.



Hydraulic Hopper Mixer Machine : 02 Nos.



Surface Vibrator : 05 Nos.



Hammer Drill Machine : 05 Nos.



Bar Bending Machine : 04 Nos.



Bar Cutting Machine : 04 Nos.



Batching Plant 30 M : 01 No.



Cube Testing Machine : 05 Nos.



Slump Testing Machine : 05 Nos.



Cube Moulds : 80 Nos.



Still Content Jar : 10 Nos.



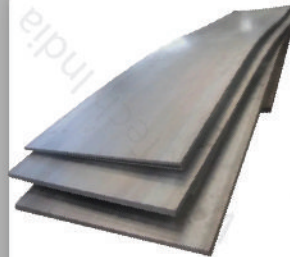
Sieves for Sieve Analysis : 10 Nos.



D.G Set : 02 Nos.



Scaffolding (Cuplock System) : 15000 Nos.



M.S Plate (3-2) : 1000 Nos.



Vibrator : 25 Nos.

# MODEL STRUCTURE DESIGN



**M/s Omniplast Pvt. Ltd.**



**M/s Omni Plast Pvt. Ltd.**  
**Projects : 27000 sqm. Area**



**M/s Omni Plast Pvt. Ltd.**  
**Projects : 27000 sqm. Area**

**M/s Delight Industrial Solutions Pvt. Ltd.**



**M/s Delight Industrial Solutions Pvt. Ltd.**  
**Projects : RCC 32500 sq ft.**



**M/s Delight Industrial Solutions Pvt. Ltd.**  
**Projects : RCC 32500 sq ft.**

# COMPLETED PROJECTS



**M/s Hanon Climate Systems Pvt. Ltd.**  
**Cost Of Projects : 125 Lacs**



**M/s Hanon Climate Systems Pvt. Ltd.**  
**Cost Of Projects : 60 Lacs**



**M/s MW Wire Tech Pvt. Ltd.**



**M/s Maruti Weld Pvt. Ltd.**  
**Cost of Projects : 175 Lacs**



**M/s Anand Mando Emobility Pvt. Ltd.**

# ONGOING PROJECTS (PEB WORK)







# ONGOING PROJECTS (RCC WORK)





+91-7877778075  
+91-9829517359



[svmdorata@gmail.com](mailto:svmdorata@gmail.com)



[www.svmdorataconstruction.com](http://www.svmdorataconstruction.com)



TA-402, Fourth Floor, Capital Galleria,  
Bhiwadi-301019, Distt. Alwar (Raj.)